

MONTHLY MEMBERSHIP PROGRESS REPORT

LOCATION PRINCE EDWARD ISLAND

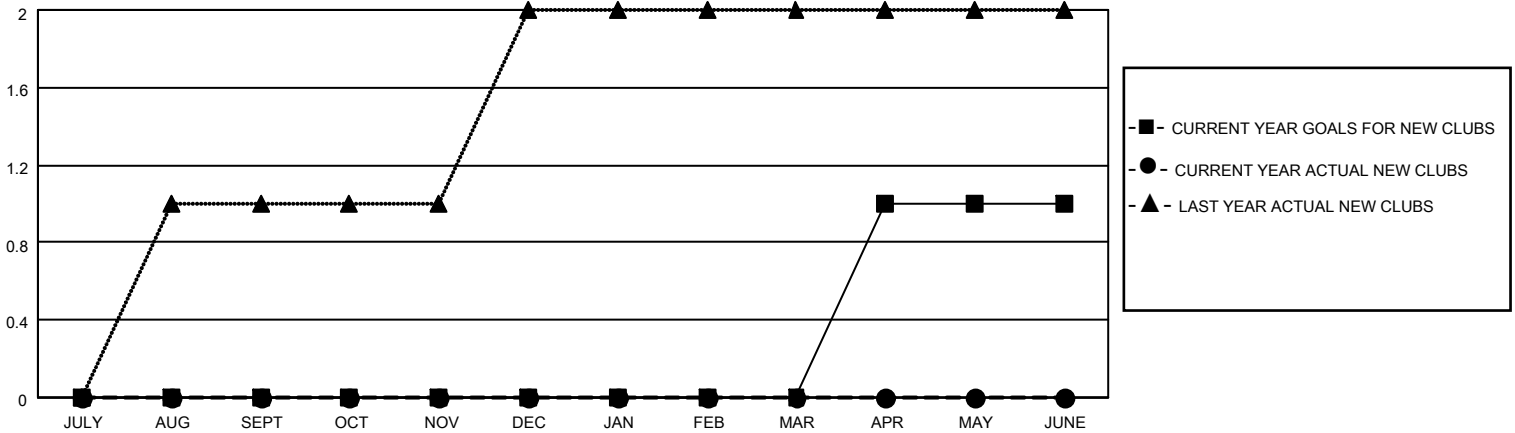
District N 1

Results as of: 5/31/2022

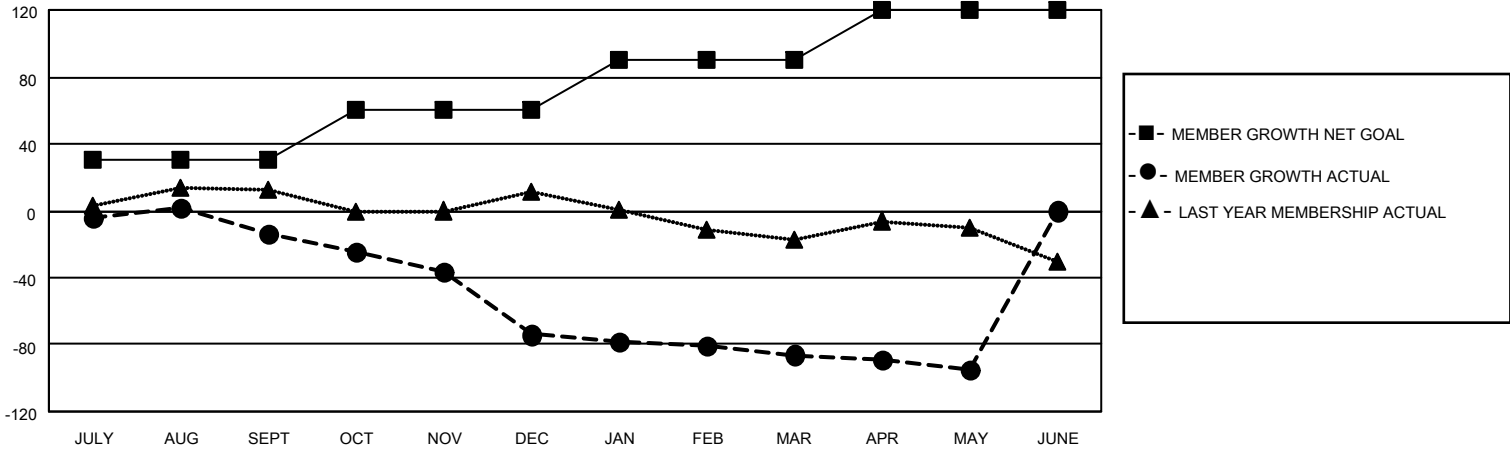
| Clubs | | | |
|-----------------------|---------------|-----------|---------------|
| RESULTS FOR 2021-2022 | | | |
| QUARTER | NEW CLUB GOAL | NEW CLUBS | DROPPED CLUBS |
| JULY/AUG/SEPT | 0 | 0 | 0 |
| OCT/NOV/DEC | 0 | 0 | 1 |
| JAN/FEB/MAR | 0 | 0 | 0 |
| APR/MAY/JUNE | 1 | 0 | 0 |

| Members | | | |
|-----------------------|------------------------|----------------------|---|
| RESULTS FOR 2021-2022 | | | |
| QUARTER | MEMBER GROWTH NET GOAL | MEMBER GROWTH ACTUAL | DROPPED MEMBERS ACTUAL (including transfers) |
| JULY/AUG/SEPT | 30 | 37 | 43 |
| OCT/NOV/DEC | 30 | 41 | 92 |
| JAN/FEB/MAR | 30 | 20 | 29 |
| APR/MAY/JUNE | 30 | 19 | 26 |

GOALS AND ACTUAL NEW CLUBS CUMULATIVE



GOALS AND ACTUAL MEMBERS CUMULATIVE



DROPPED CLUBS: 1

36 CLUBS OF 79 ADDED 1 OR MORE NEW MEMBERS

GENDER DISTRIBUTION

| | |
|----------------------|----------------|
| MALE | 1,176 (73.04%) |
| FEMALE | 433 (26.89%) |
| NON BINARY | 0 (0.00%) |
| PREFER NOT TO ANSWER | 1 (0.06%) |

DROPPED MEMBERS

| | |
|----------------|------------|
| DECEASED | 27 |
| CLUB CANCELLED | 9 |
| OTHER | 154 |
| TOTAL | 190 |

[CLICK HERE FOR CUMULATIVE MEMBERSHIP DATA](#)

| | |
|---------------------------------|-----|
| TOTAL FAMILY UNIT MEMBERS | 279 |
| FAMILY MEMBERS PAYING HALF DUES | 144 |